

Figure 1

Pathway to Excellence

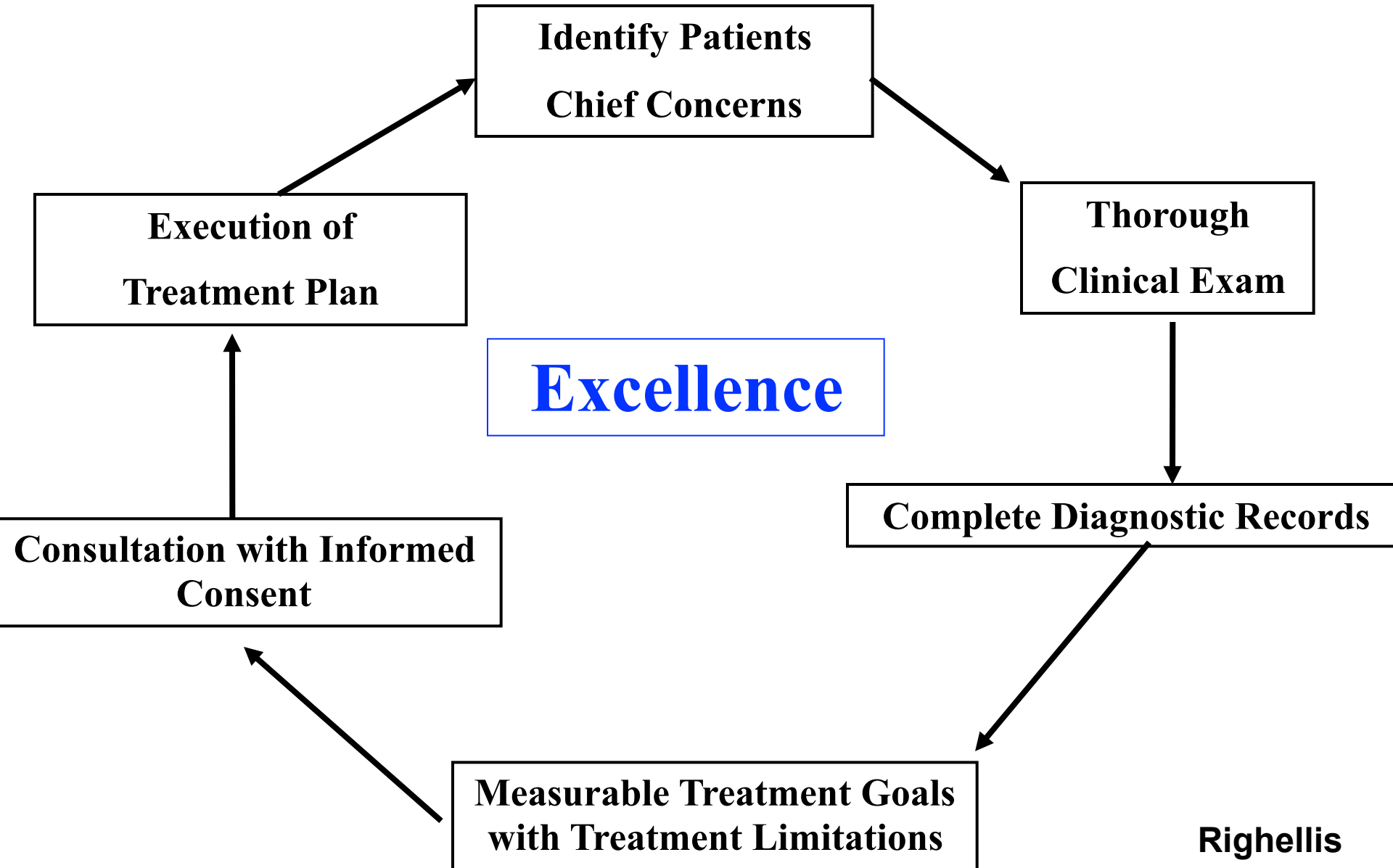


Figure 2

Total Patient Load

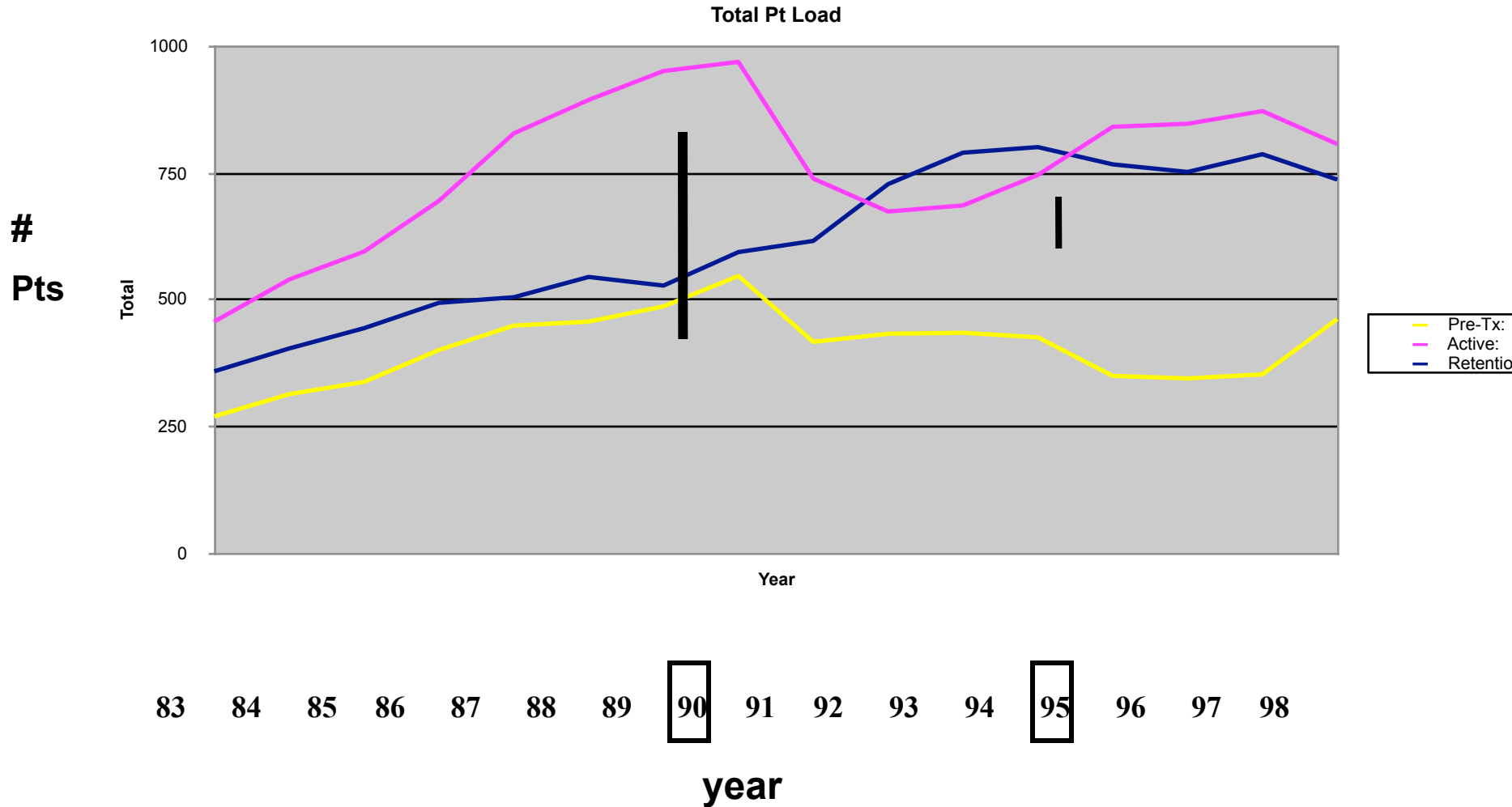


Figure 3



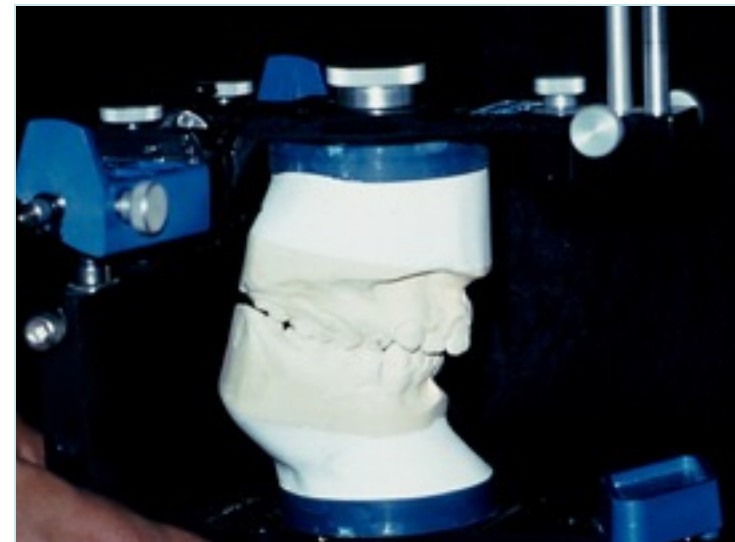
Face Bow Mounting



Centric Relation Position

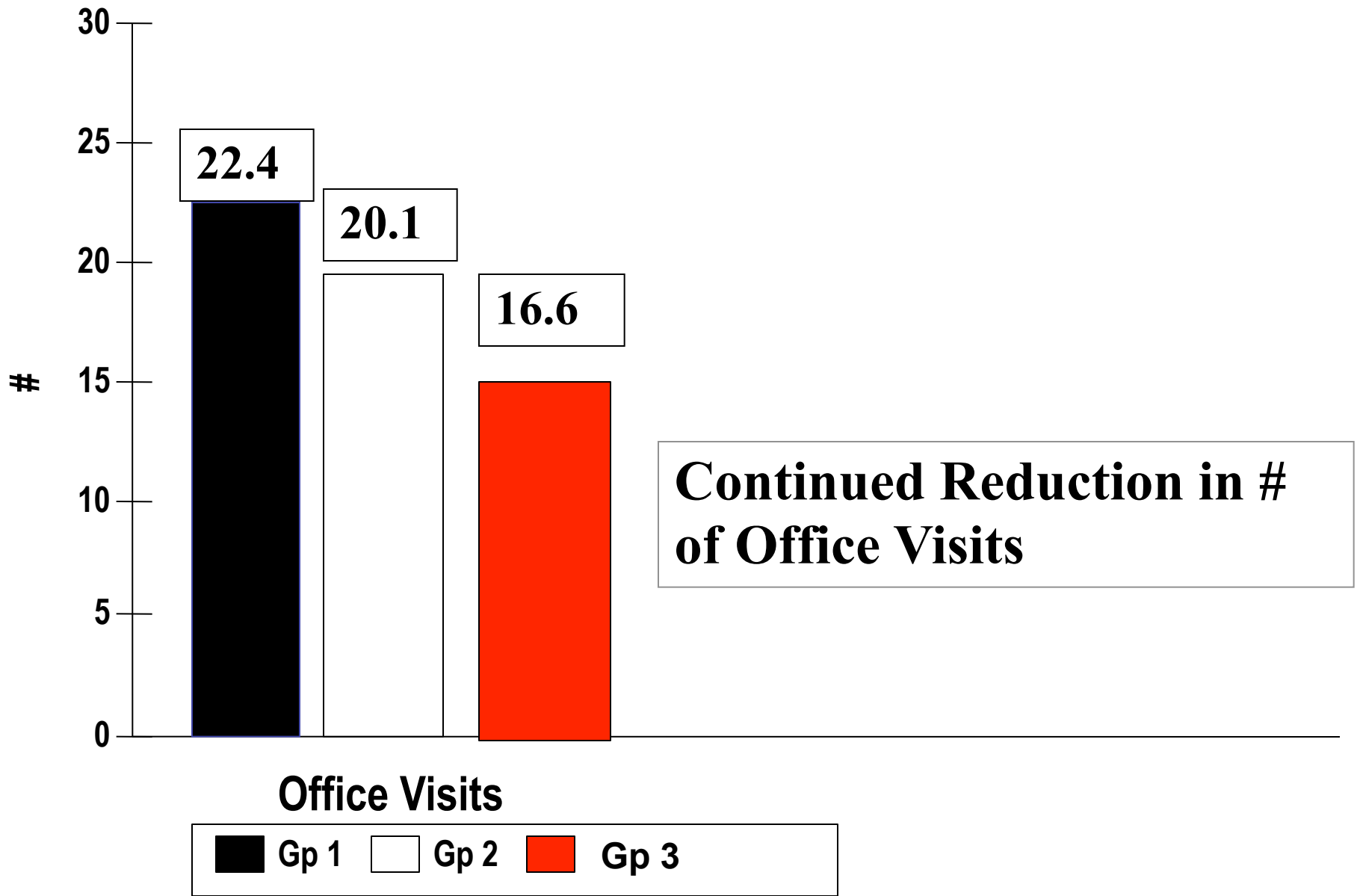


Two Piece Wax Technique

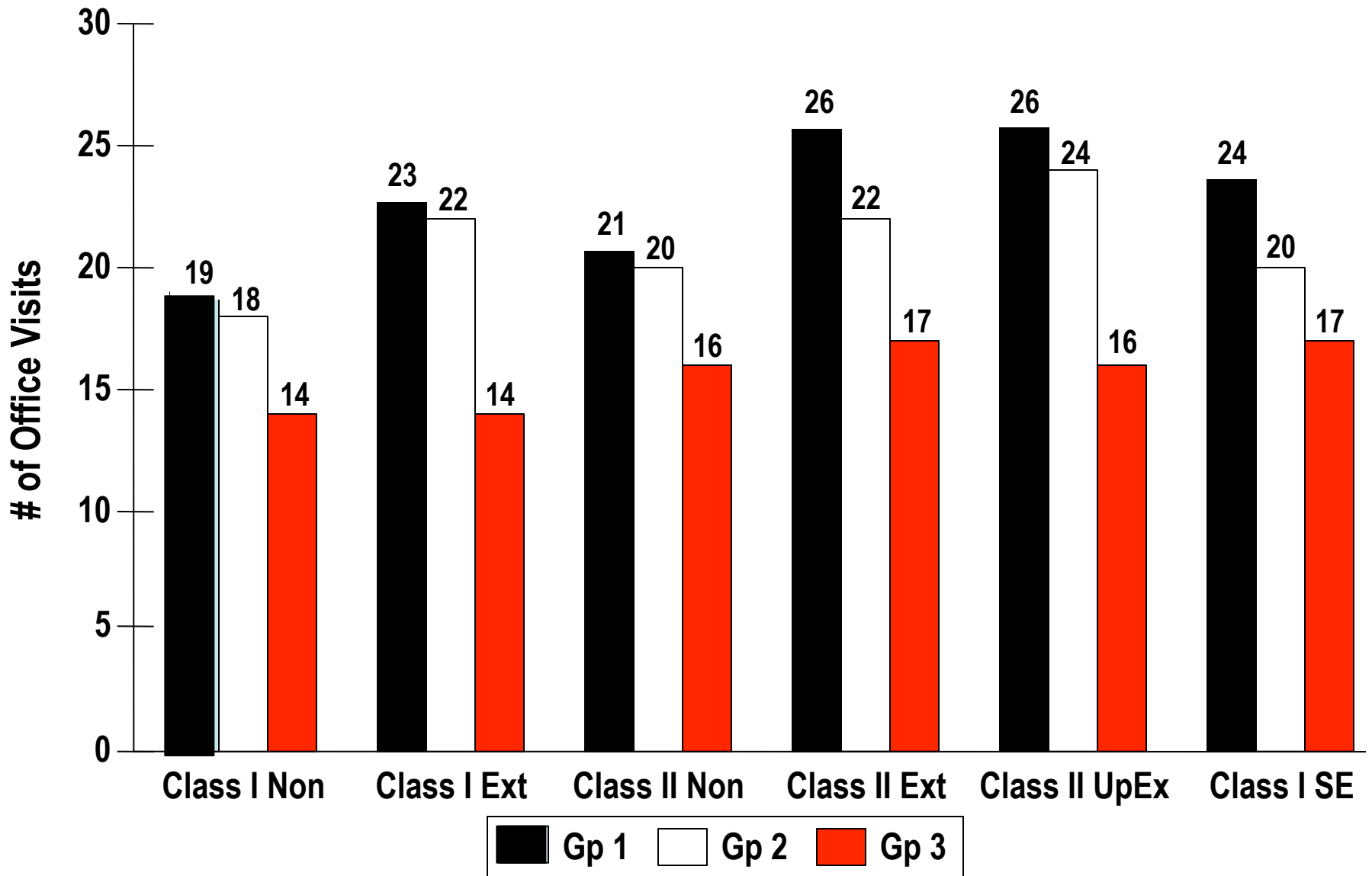


Panadent Articulator

Graph 1 Mean # of Office Visits (samples)

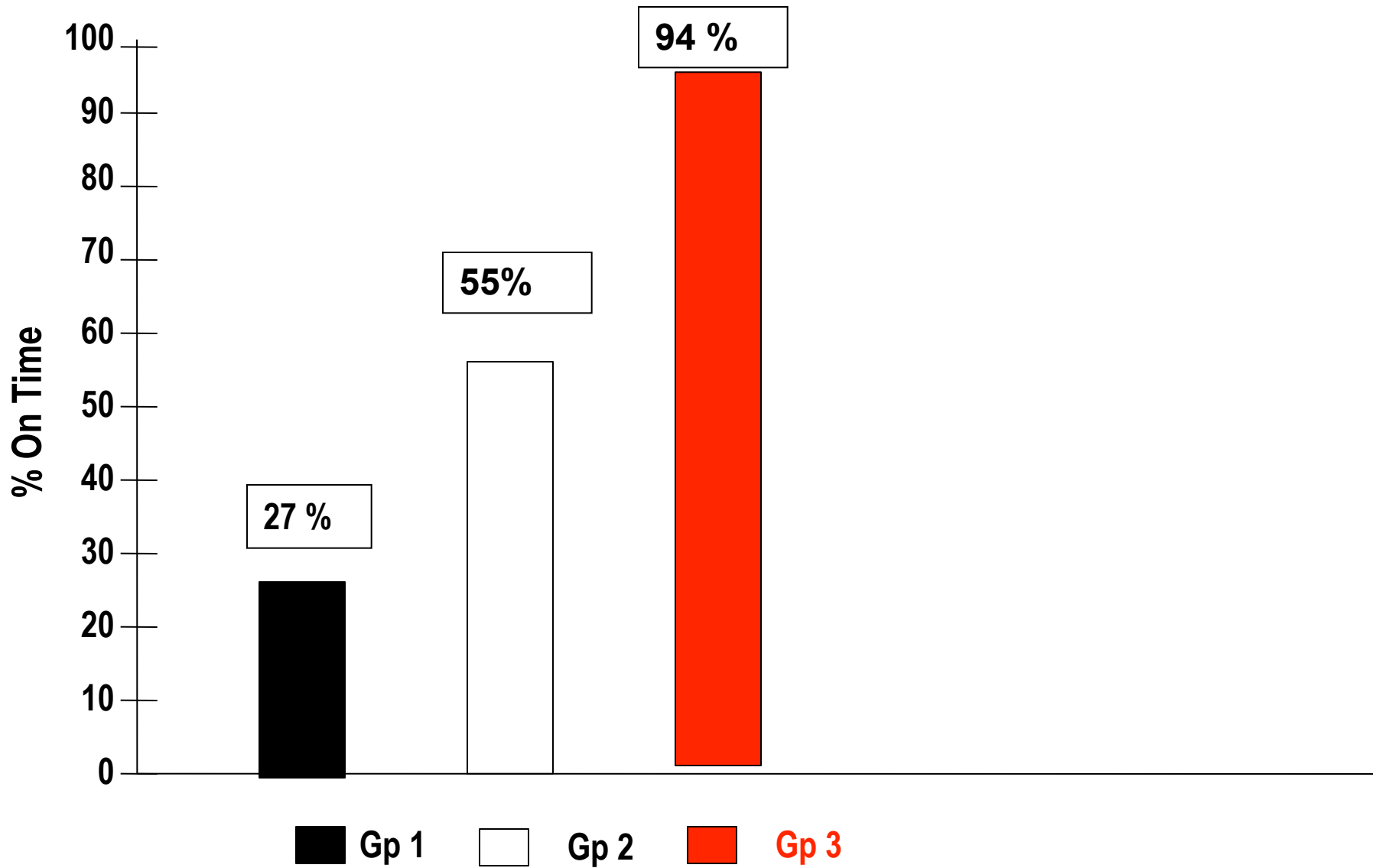


Graph 2 Mean # of Office Visits (sub groups)



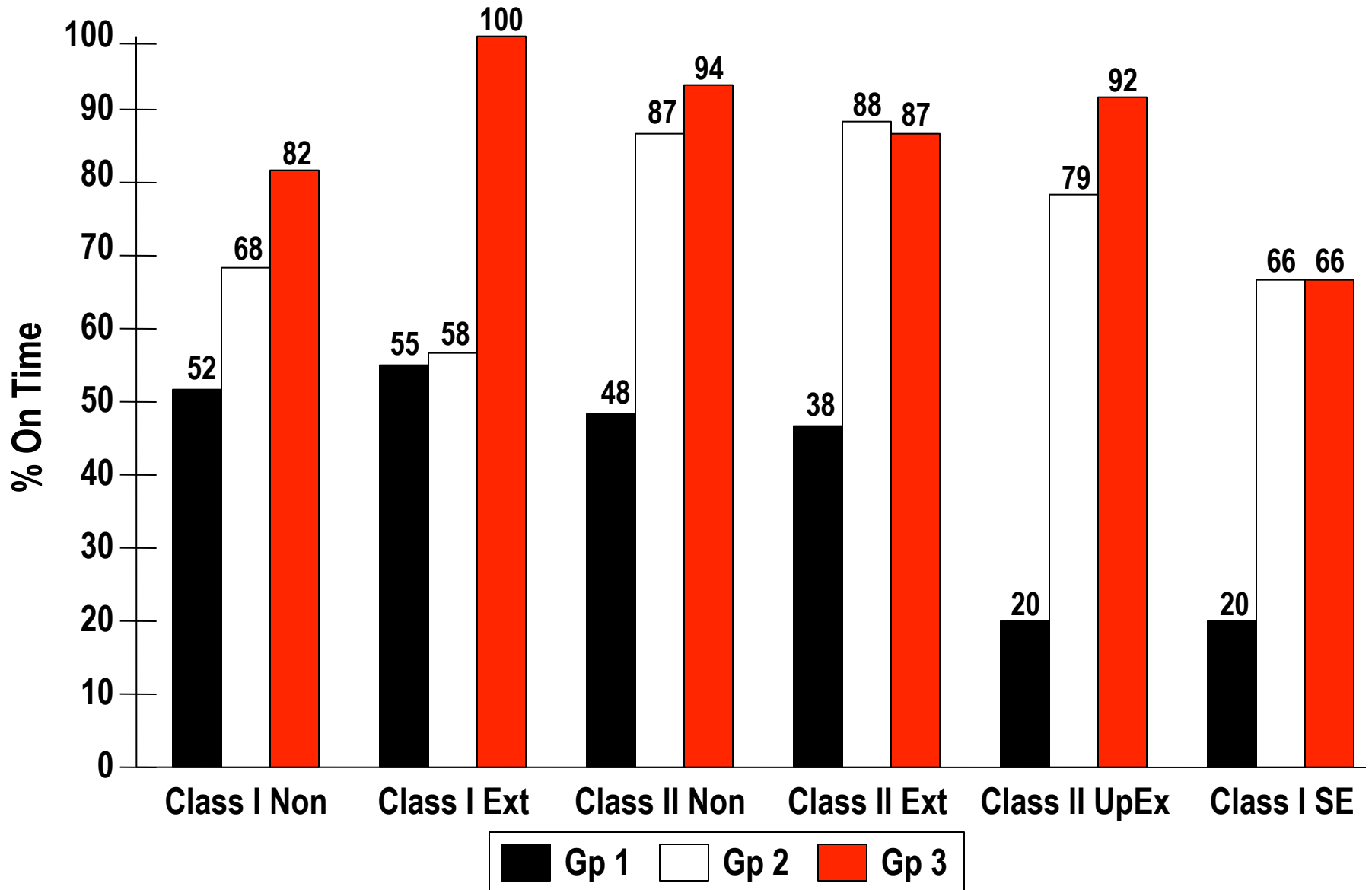
Graph 3

% 'On Time' (samples)



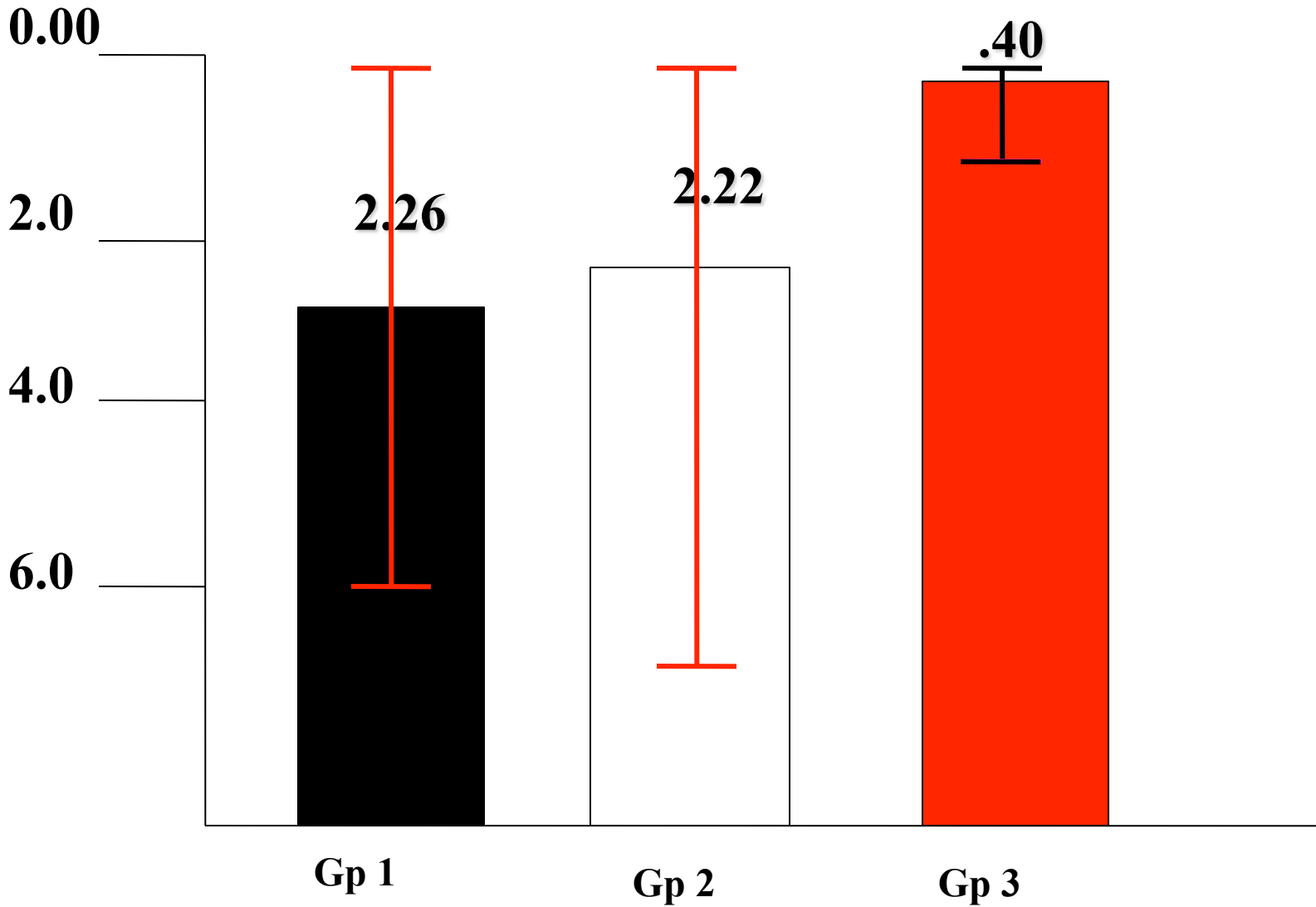
Graph 4

% 'On Time' (sub groups)



Graph 5

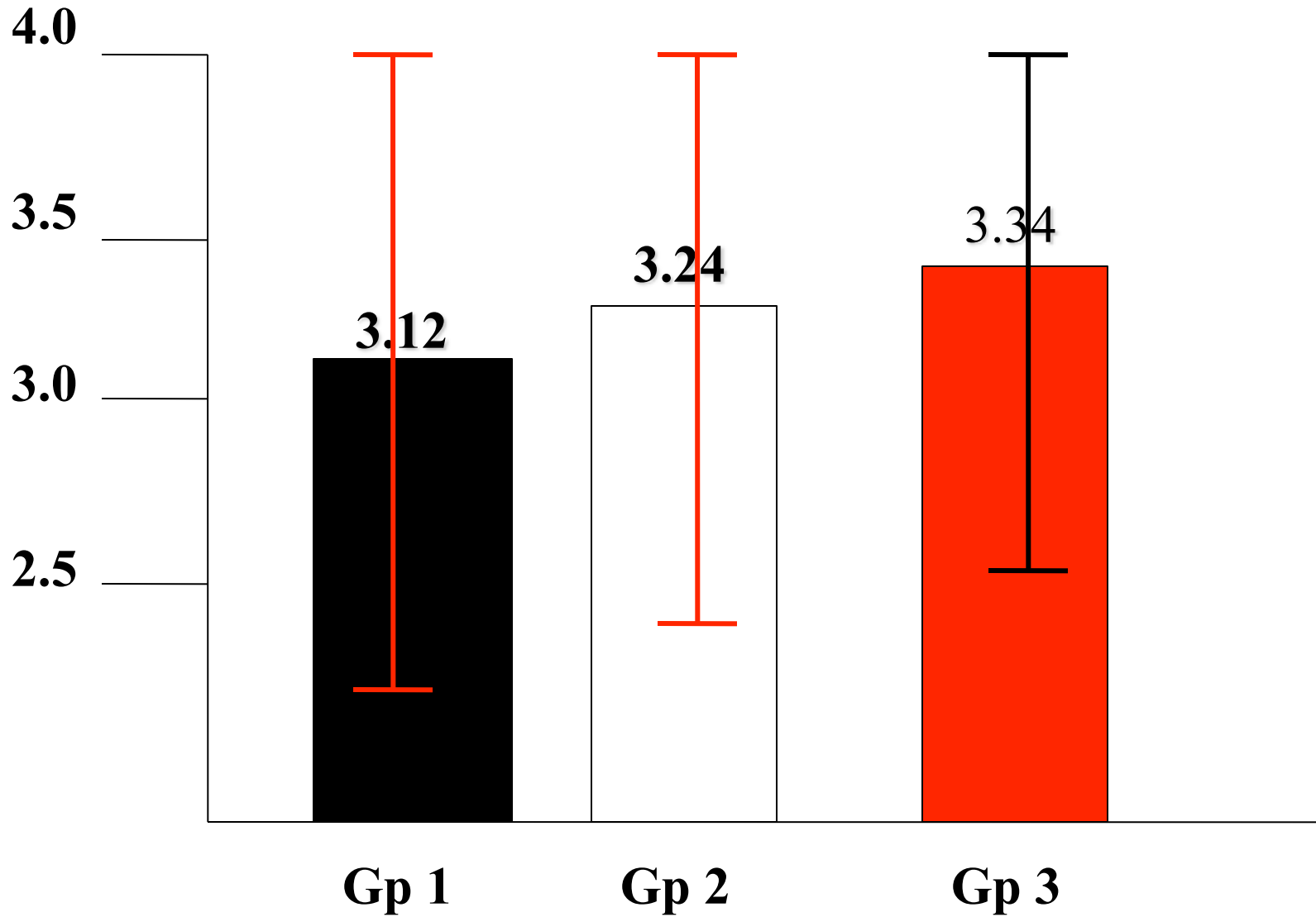
Treatment Excellence
PAR Index (by samples)



Graph 6

Treatment Excellence

Andrews Scoring Summary (by samples)

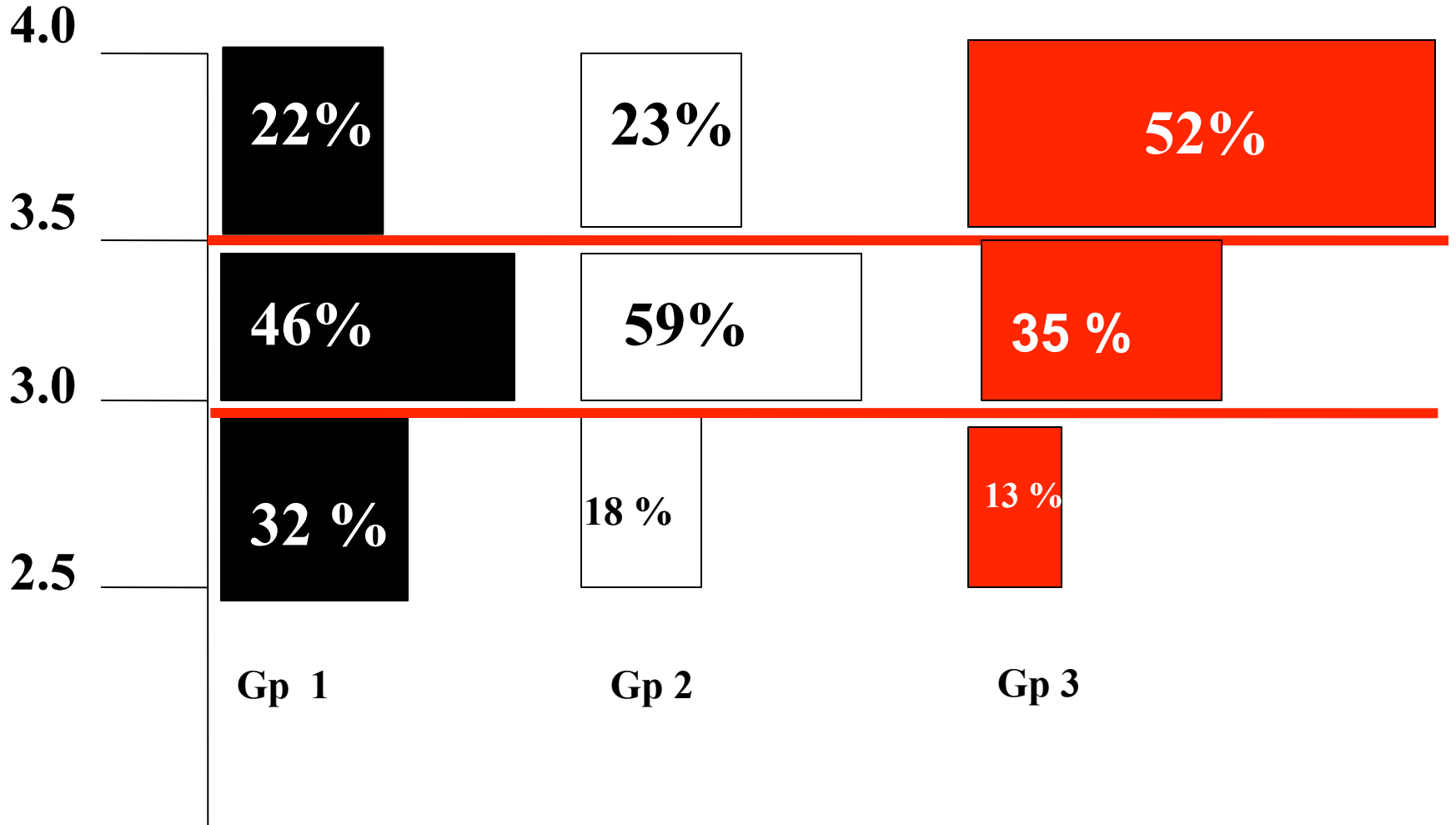


Graph 7

Andrews Extremes Score Distribution:

>3.5 (clinical excellence)

<3.0 (dental compensations for underlying skeletal problems/detailing)



% of Cases

Figure 4

Increased prevalence of upper premolar extraction cases



- **Sample #** (Upper premolar extraction sample)
- **Group 1** **10.8%**
- **Group 2** **20.6%**
- **Group 3** **19.3%**

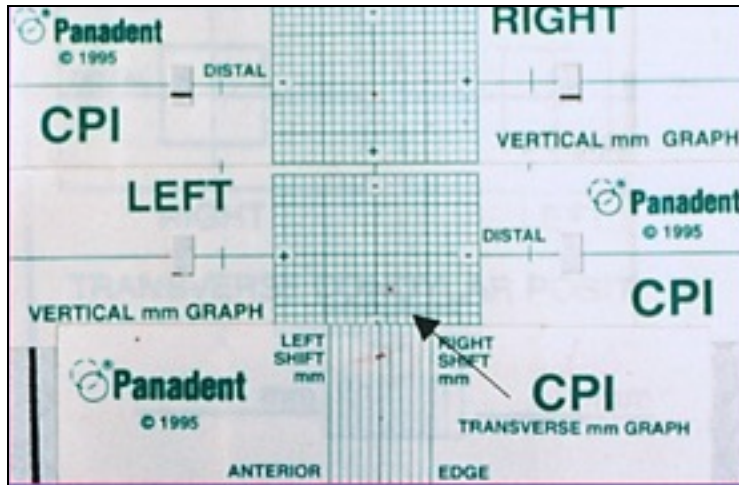
Figure 5

Increased prevalence of upper premolar extraction cases

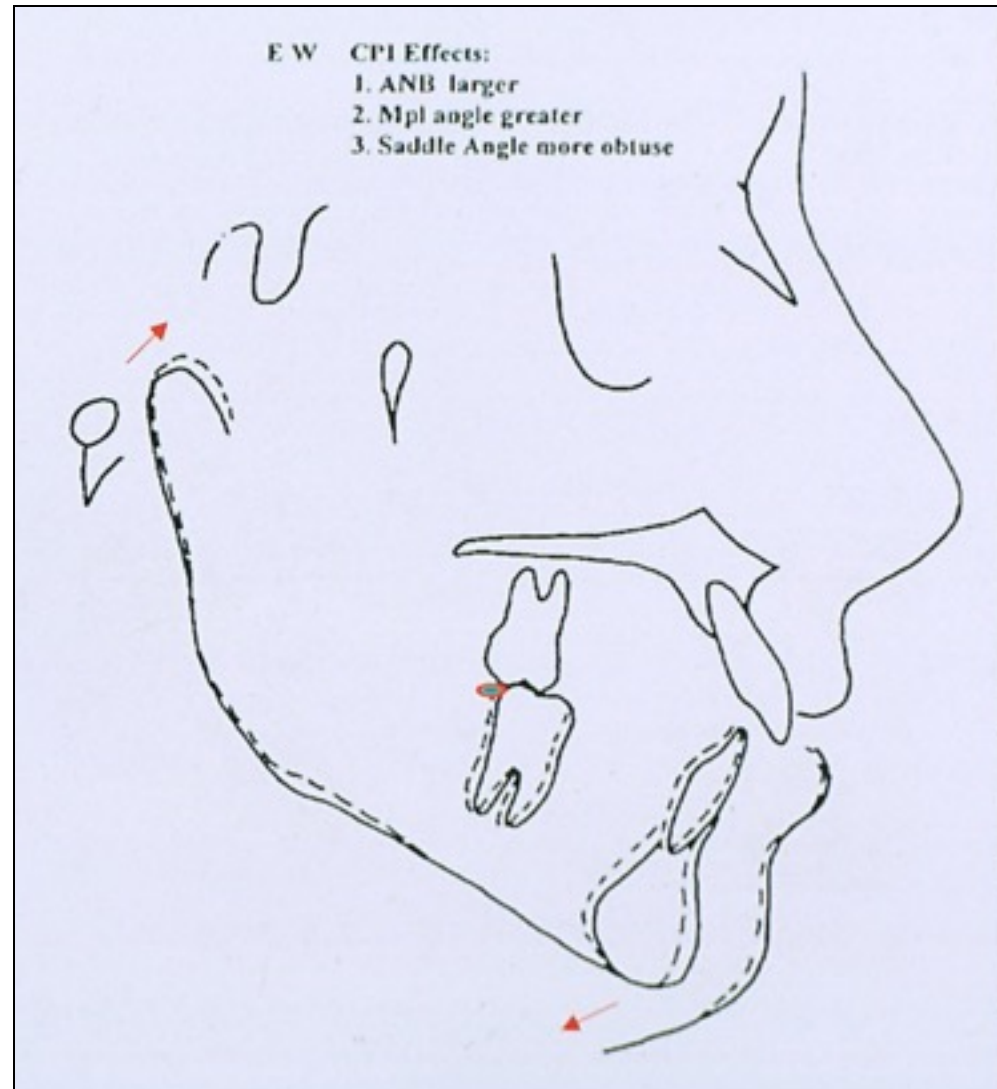


Figure 6

Effects on mandibular position after centric occlusion-centric relation head film conversion using CPI



using CPI



CPI Effects:

1. ANB angle larger
2. Mandibular Plane angle greater
3. Saddle angle more obtuse